

Lotspeich and Associates, Inc.
ECOLOGICAL CONSULTANTS
 2711 West Fairbanks Avenue, Winter Park, Florida 32789
 407.740.8482 Fax: 645.1305 www.lotspeichandassociates.com

East West Road Segment 2
 (Harrell Road to Dean Road)
 Project No. Y2-828-DB (CIP 2752)
 in Section 13, Township 22 South, Range 30 East and Section 18,
 Township 22, Range 31 East, Orange County, Florida

Vicinity Map

↑ North

Scale: 1" = 1 mile

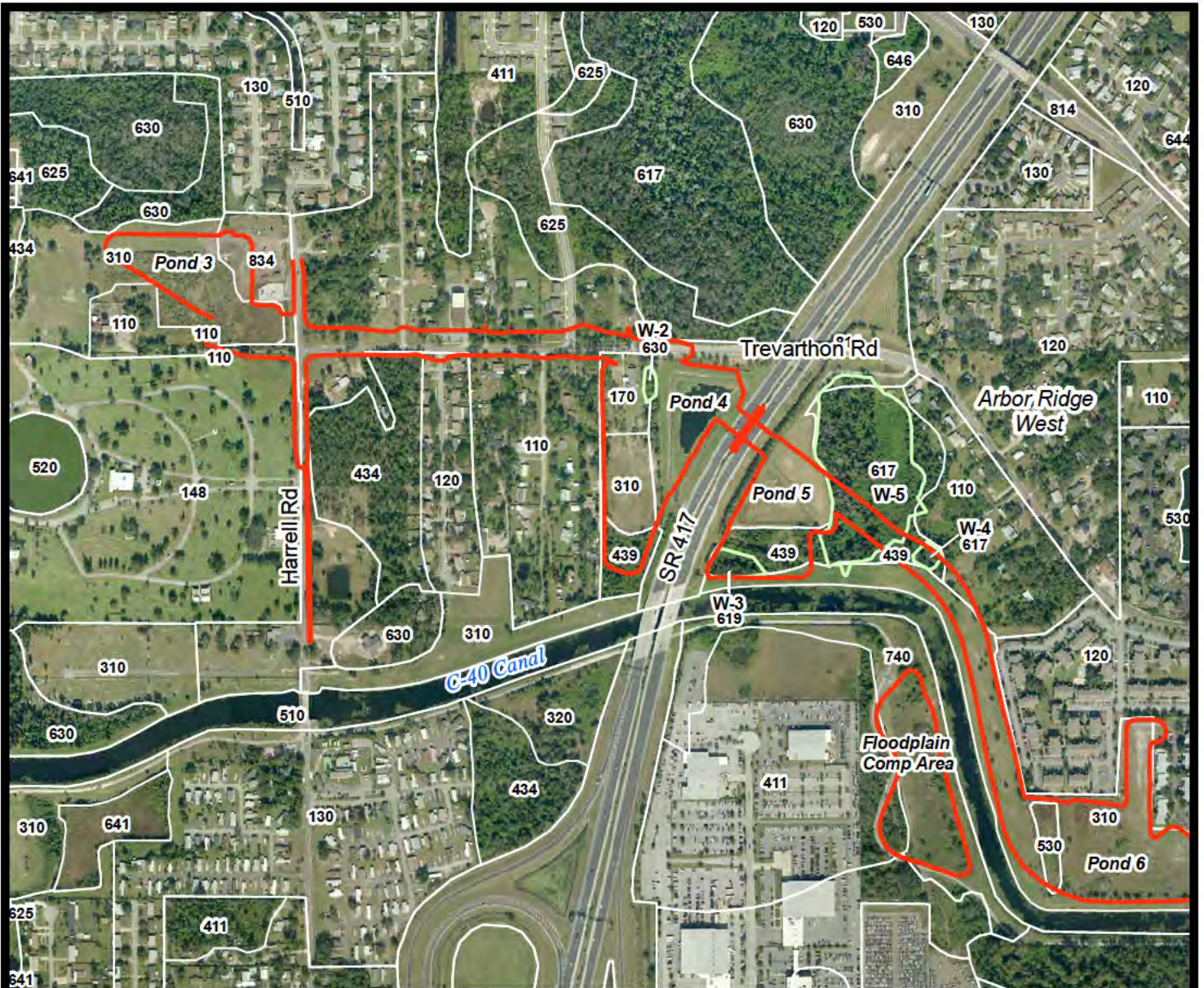
File: 03060.MXD

Drawn By: BEH



Job No.: 2003-060.33

Date: 3 Oct 2012

Figure 1



Legend

-  Limits of Construction
-  Approved wetland lines

Notes:

Land cover classification based on Florida Land Use, Cover & Forms Classification System, FDOT, 1999.

Land cover delineation and classification based on aerial photointerpretation and surveyed wetland lines. Wetland limits as flagged by L&A and surveyed by URS. Acreage calculations should be considered approximate and wetland limits are subject to approval by regulatory agencies. This is not a survey.

Limits of construction shown as provided by URS, Inc.

2007 aerial photography provided in GIS format by the Orange County Property Appraiser's Office.

Land Cover Codes:

- | | |
|--|--------------------------------|
| 110 - Residential, Low Density (less than two dwelling units per acre) | 434 - Hardwood - Conifer Mixed |
| 120 - Residential, Medium Density (2-5 dwelling units per acre) | 439 - Exotic Upland Hardwoods |
| 130 - Residential, High Density | 510 - Streams and Waterways |
| 170 - Institutional | 530 - Reservoirs |
| 148 - Cemeteries | 617 - Mixed Wetland Hardwoods |
| 243 - Ornamental Nursery | 619 - Exotic Wetland Hardwoods |
| 310 - Herbaceous | 630 - Wetland Forested Mixed |
| 320 - Shrub and Brushland | 740 - Disturbed Lands |
| 411 - Pine Flatwoods | 814 - Roads & Highways |
| | 834 - Sewage Treatment |

Lotspeich and Associates, Inc.
ECOLOGICAL CONSULTANTS
 2711 West Fairbanks Avenue, Winter Park, Florida 32789
 407.740.8482 Fax: 645.1305 www.lotspeichandassociates.com

East West Road Segment 2
 (Harrell Road to Dean Road)
 Project No. Y2-828-DB (CIP 2752)
 in Section 13, Township 22 South, Range 30 East and Section 18,
 Township 22, Range 31 East, Orange County, Florida

Existing Land Cover Map



Scale: 1" = 750'

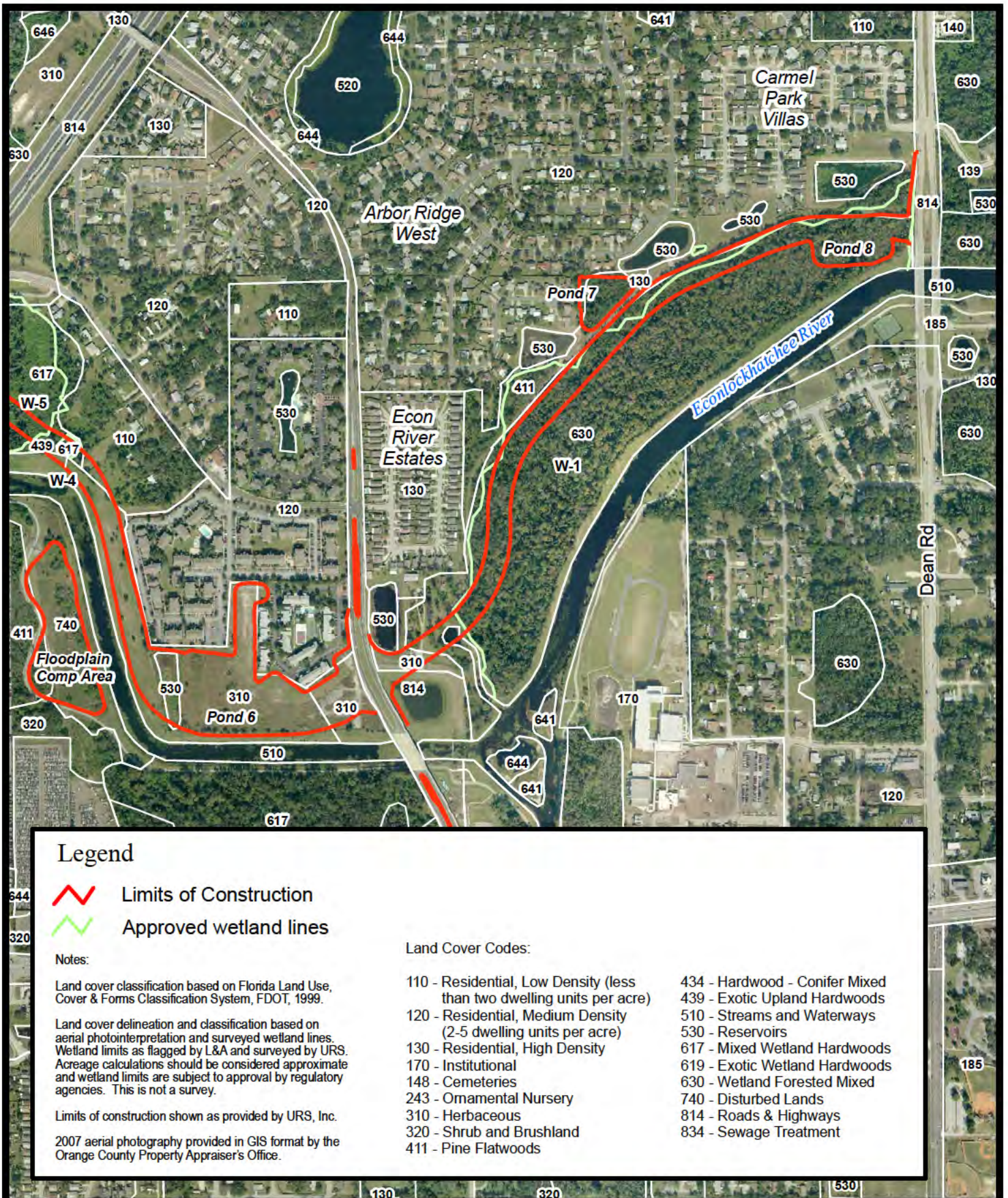
Figure 4a

File: 03060.MXD



Drawn By: BEH

Job No.: 2003-060.33

Date: 3 Oct 2012



Legend

-  Limits of Construction
-  Approved wetland lines

Notes:

Land cover classification based on Florida Land Use, Cover & Forms Classification System, FDOT, 1999.

Land cover delineation and classification based on aerial photointerpretation and surveyed wetland lines. Wetland limits as flagged by L&A and surveyed by URS. Acreage calculations should be considered approximate and wetland limits are subject to approval by regulatory agencies. This is not a survey.

Limits of construction shown as provided by URS, Inc.

2007 aerial photography provided in GIS format by the Orange County Property Appraiser's Office.

Land Cover Codes:

- | | |
|--|--------------------------------|
| 110 - Residential, Low Density (less than two dwelling units per acre) | 434 - Hardwood - Conifer Mixed |
| 120 - Residential, Medium Density (2-5 dwelling units per acre) | 439 - Exotic Upland Hardwoods |
| 130 - Residential, High Density | 510 - Streams and Waterways |
| 170 - Institutional | 530 - Reservoirs |
| 148 - Cemeteries | 617 - Mixed Wetland Hardwoods |
| 243 - Ornamental Nursery | 619 - Exotic Wetland Hardwoods |
| 310 - Herbaceous | 630 - Wetland Forested Mixed |
| 320 - Shrub and Brushland | 740 - Disturbed Lands |
| 411 - Pine Flatwoods | 814 - Roads & Highways |
| | 834 - Sewage Treatment |

Lotspeich and Associates, Inc.
ECOLOGICAL CONSULTANTS
 2711 West Fairbanks Avenue, Winter Park, Florida 32789
 407.740.8482 Fax: 645.1305 www.lotspeichandassociates.com

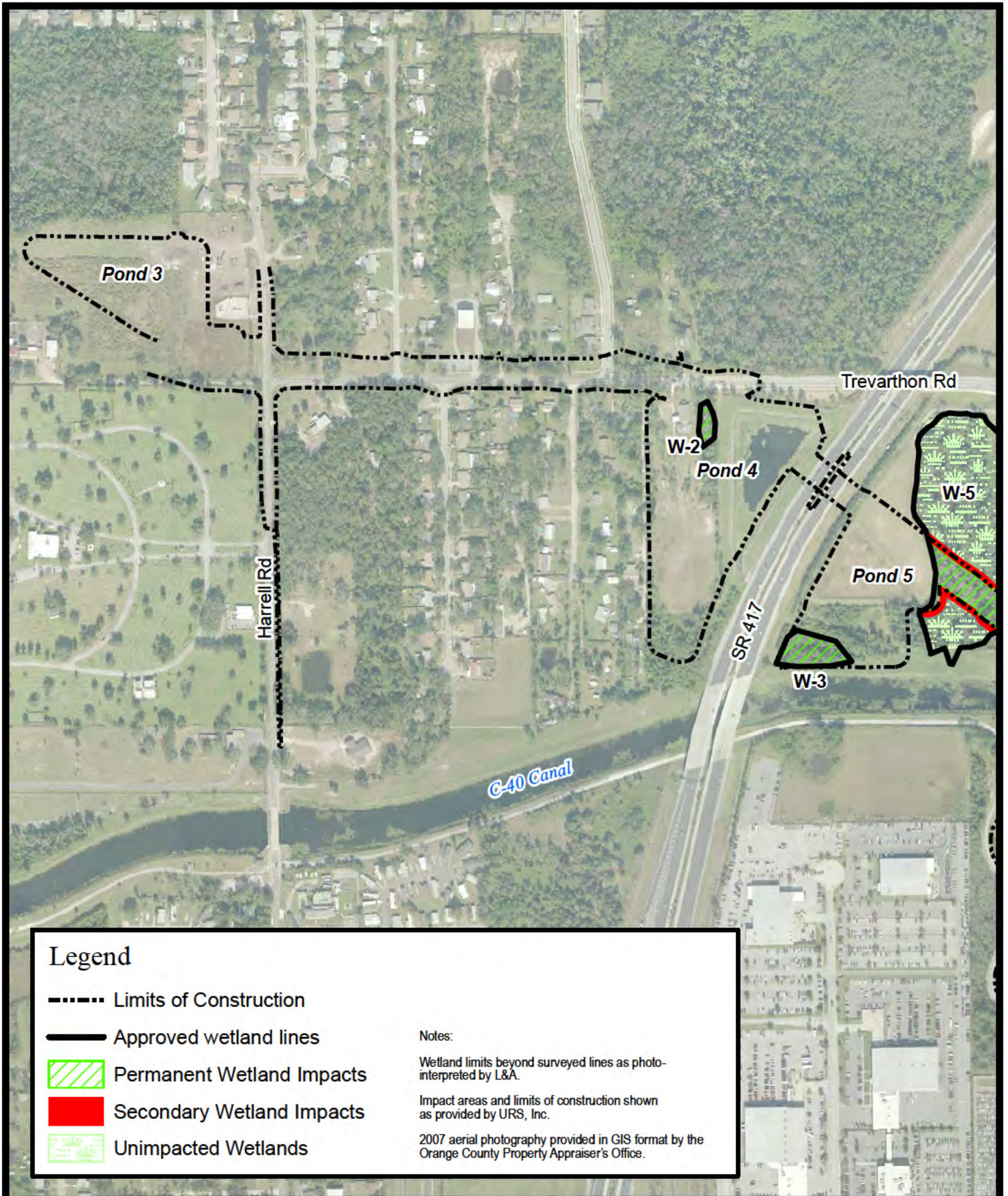
East West Road Segment 2
 (Harrell Road to Dean Road)
 Project No. Y2-828-DB (CIP 2752)
 in Section 13, Township 22 South, Range 30 East and Section 18,
 Township 22, Range 31 East, Orange County, Florida

Existing Land Cover Map

↑ North

Scale: 1" = 750'

Figure 4b



Legend		
	Limits of Construction	
	Approved wetland lines	
	Permanent Wetland Impacts	
	Secondary Wetland Impacts	
	Unimpacted Wetlands	
		Notes:
		Wetland limits beyond surveyed lines as photo-interpreted by L&A.
		Impact areas and limits of construction shown as provided by URS, Inc.
		2007 aerial photography provided in GIS format by the Orange County Property Appraiser's Office.

Lotspeich and Associates, Inc.
 ECOLOGICAL CONSULTANTS
 2711 West Fairbanks Avenue, Winter Park, Florida 32789
 407.740.8482 Fax: 645.1305 www.lotspeichandassociates.com

East West Road Segment 2
 (Harrell Road to Dean Road)
 Project No. Y2-828-DB (CIP 2752)
 in Section 13, Township 22 South, Range 30 East and Section 18,
 Township 22, Range 31 East, Orange County, Florida

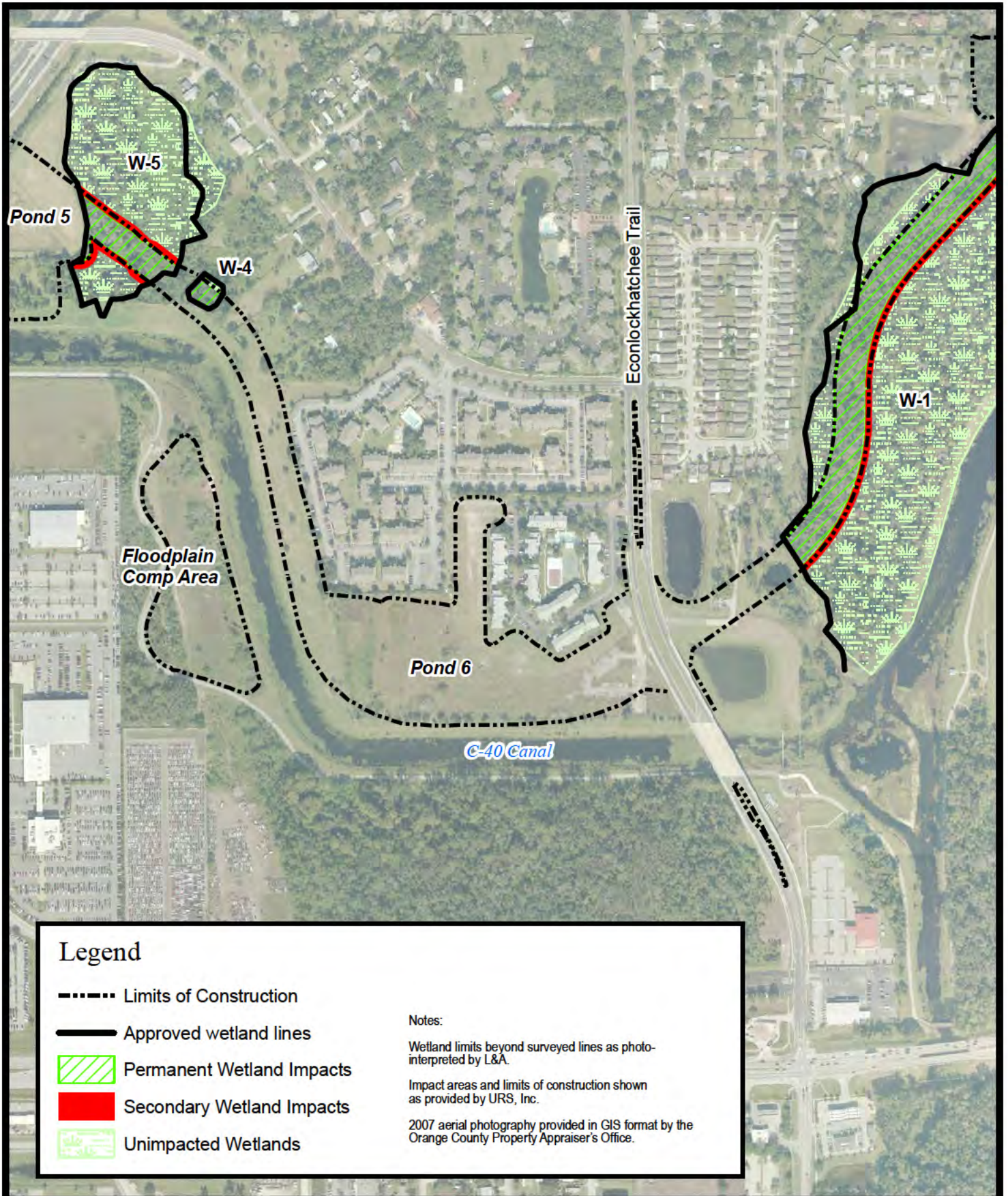
Wetland Impact Map

↑ North

Scale: 1" = 500'

Figure 5a

File: 03060.MXD Drawn By: BEH Job No.: 2003-060.33 Date: 3 Oct 2012



Legend

- Limits of Construction
- Approved wetland lines
- ▨ Permanent Wetland Impacts
- Secondary Wetland Impacts
- ▨ Unimpacted Wetlands

Notes:

Wetland limits beyond surveyed lines as photo-interpreted by L&A.

Impact areas and limits of construction shown as provided by URS, Inc.

2007 aerial photography provided in GIS format by the Orange County Property Appraiser's Office.

Lotspeich and Associates, Inc.
ECOLOGICAL CONSULTANTS
 2711 West Fairbanks Avenue, Winter Park, Florida 32789
 407.740.8482 Fax: 645.1305 www.lotspeichandassociates.com

East West Road Segment 2
 (Harrell Road to Dean Road)
 Project No. Y2-828-DB (CIP 2752)
 in Section 13, Township 22 South, Range 30 East and Section 18,
 Township 22, Range 31 East, Orange County, Florida

Wetland Impact Map



Scale: 1" = 500'

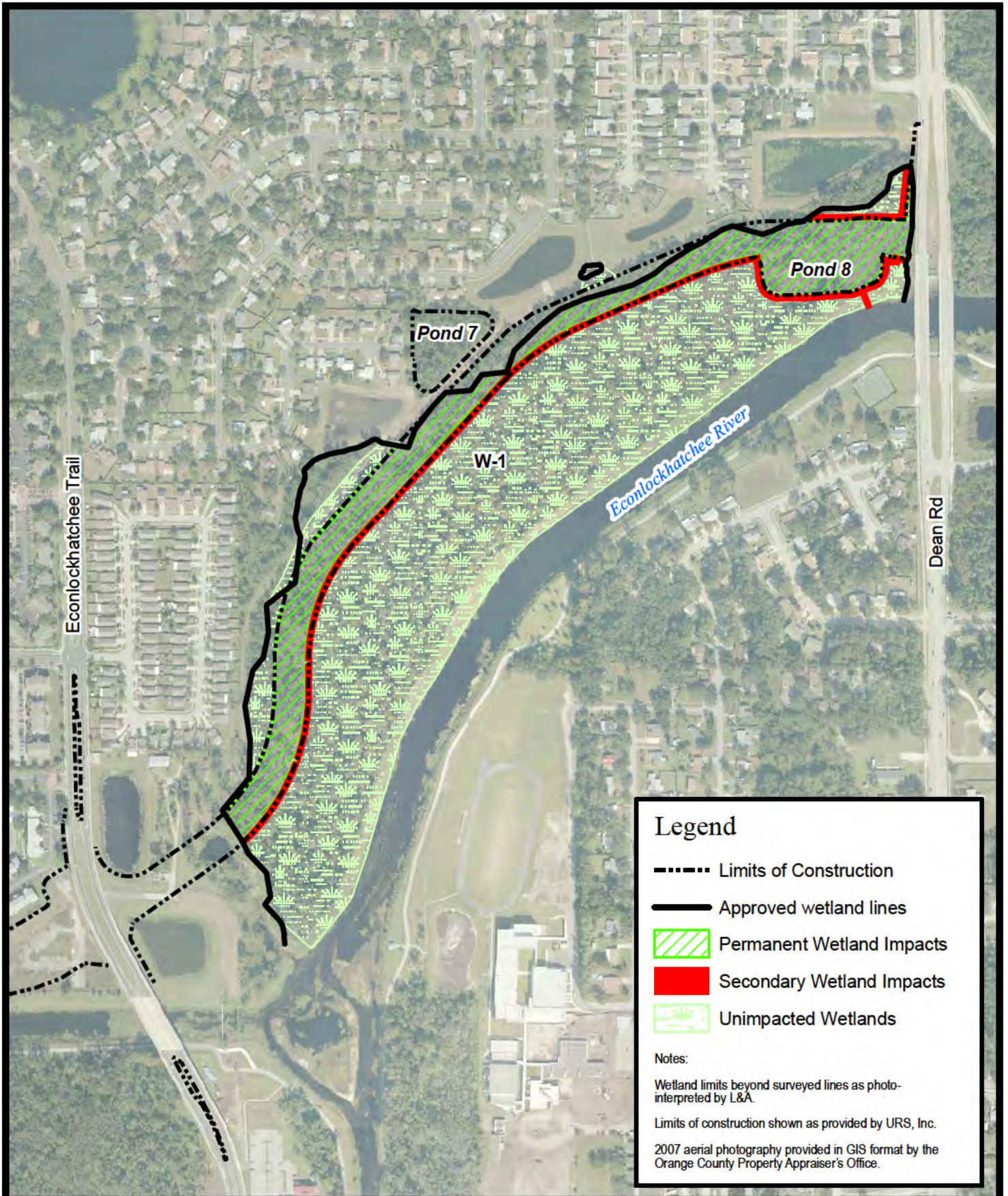
Figure 5b

File: 03060.MXD

Drawn By: BEH

Job No.: 2003-060.33

Date: 3 Oct 2012



Legend

- Limits of Construction
- Approved wetland lines
- Permanent Wetland Impacts
- Secondary Wetland Impacts
- Unimpacted Wetlands

Notes:

Wetland limits beyond surveyed lines as photo-interpreted by L&A.

Limits of construction shown as provided by URS, Inc.

2007 aerial photography provided in GIS format by the Orange County Property Appraiser's Office.

Lotspeich and Associates, Inc.
 ECOLOGICAL CONSULTANTS
 2711 West Fairbanks Avenue, Winter Park, Florida 32789
 407.740.8482 Fax: 645.1305 www.lotspeichandassociates.com

East West Road Segment 2
 (Harrell Road to Dean Road)
 Project No. Y2-828-DB (CIP 2752)
 in Section 13, Township 22 South, Range 30 East and Section 18,
 Township 22, Range 31 East, Orange County, Florida

Wetland Impact Map

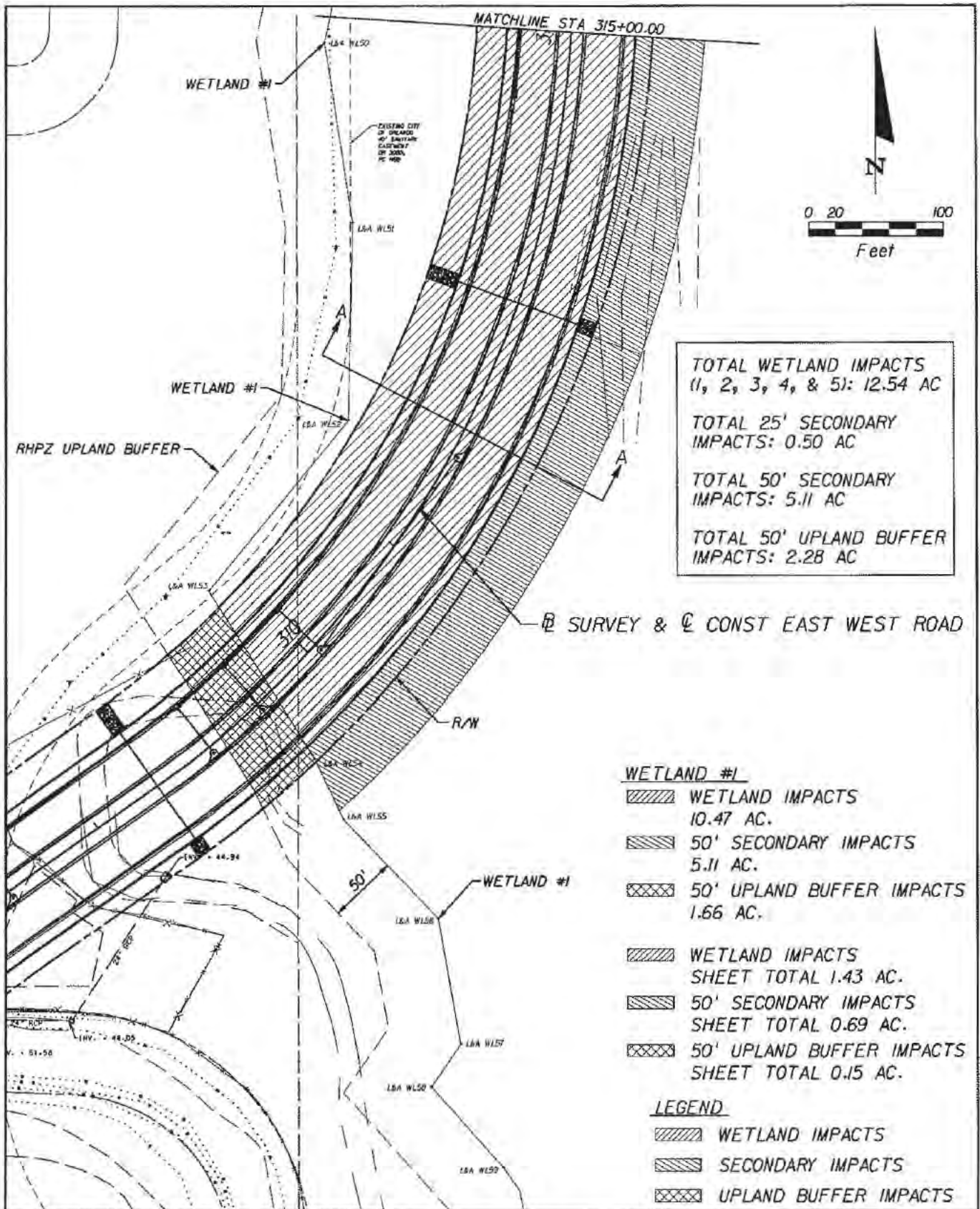
↑ North

Scale: 1" = 500'

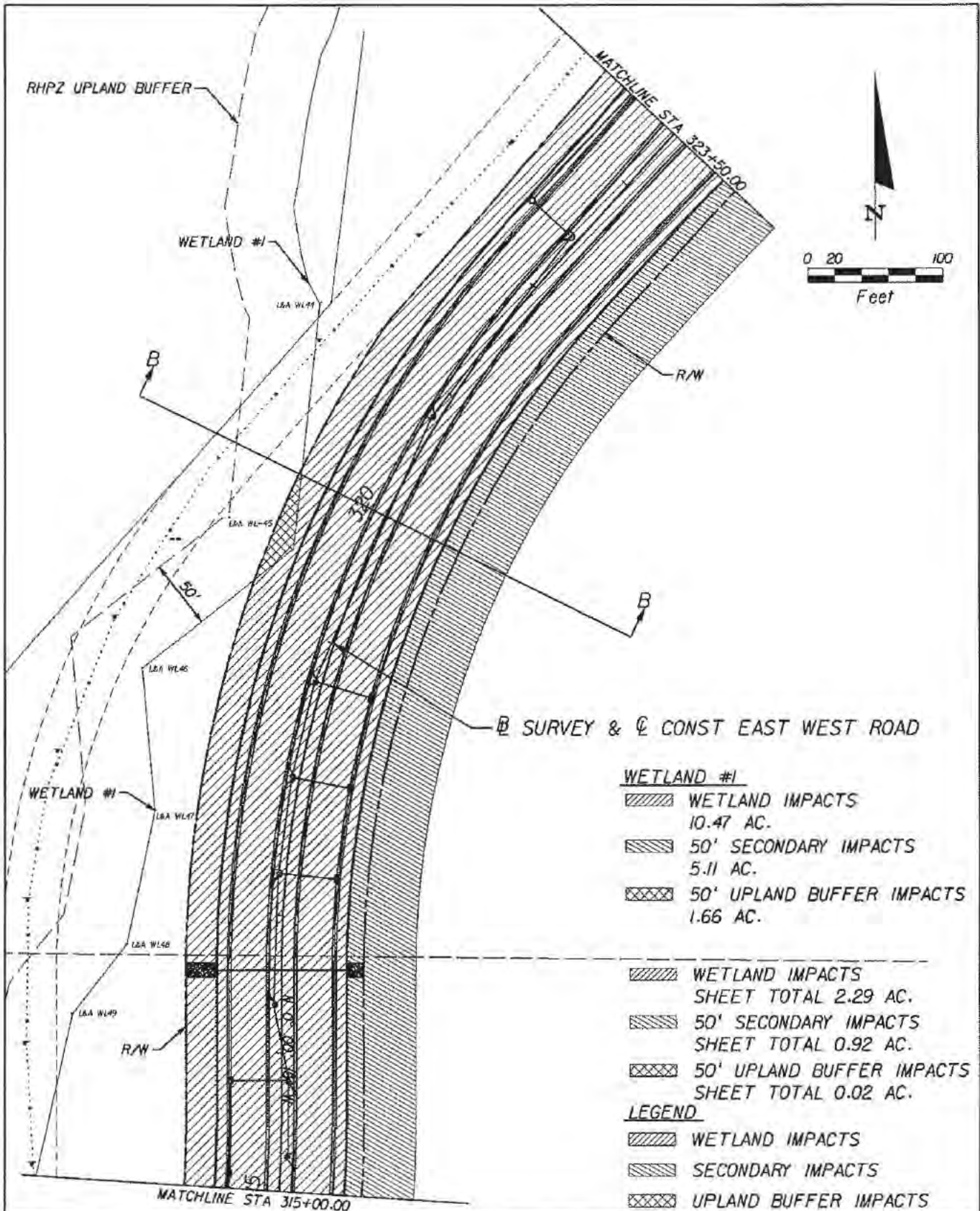
Figure 5c

APPENDIX A




Copies of URS Dredge and Fill Sketches, Plan Views






STATE: FLORIDA COUNTY: ORANGE DATUM: FT. NGVD (1929)	EAST WEST ROAD SEGMENT II	SHEET: 1 OF 19 SIGNED: REG. FLA. ENG. No. : 68228
DRAWN BY: DTL	URS <small>315 E. ROBINSON STREET, SUITE 245 ORLANDO, FL 32801-1975 PH (407) 422-0353 FAX (407) 423-2695 NO. 000002</small>	PLAN VIEW WETLAND #1
CHECKED BY: FF		


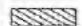



WETLAND #1

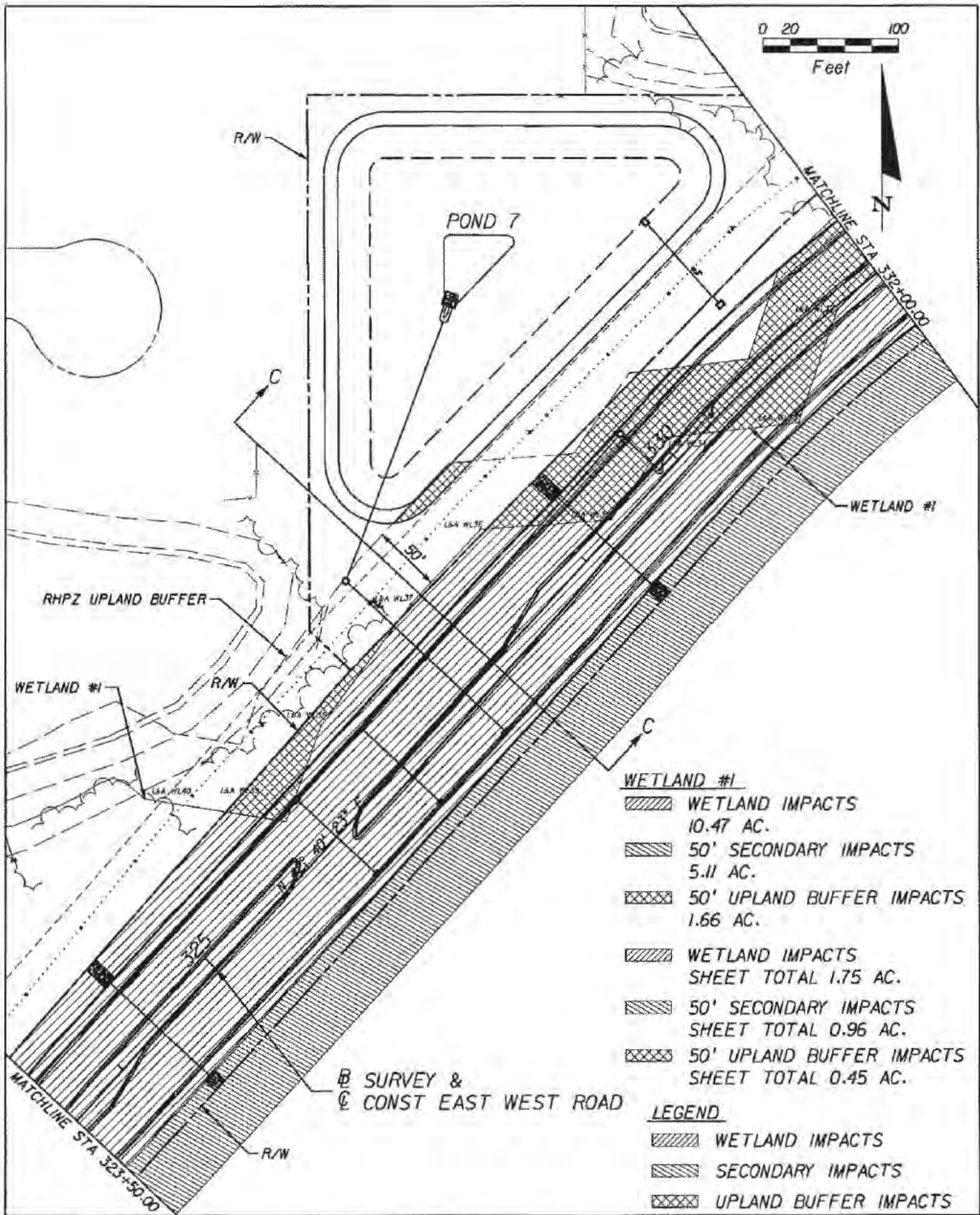
-  WETLAND IMPACTS
10.47 AC.
-  50' SECONDARY IMPACTS
5.11 AC.
-  50' UPLAND BUFFER IMPACTS
1.66 AC.

-  WETLAND IMPACTS
SHEET TOTAL 2.29 AC.
-  50' SECONDARY IMPACTS
SHEET TOTAL 0.92 AC.
-  50' UPLAND BUFFER IMPACTS
SHEET TOTAL 0.02 AC.

LEGEND

-  WETLAND IMPACTS
-  SECONDARY IMPACTS
-  UPLAND BUFFER IMPACTS

STATE: FLORIDA COUNTY: ORANGE DATUM: FT. NGVD (1929)	EAST WEST ROAD SEGMENT II	SHEET: 3 OF 19 SIGNED: REG. FLA. ENG. No. : 68228
DRAWN BY: DTL	URS <small>315 E. ROBINSON STREET, SUITE 245 ORLANDO, FL 32801-1975 PH (407) 422-0353 FAX (407) 423-2695 NO. 000002</small>	PLAN VIEW WETLAND #1
CHECKED BY: FF		



STATE: FLORIDA
 COUNTY: ORANGE
 DATUM: FT. NGVD (1929)

**EAST WEST ROAD
 SEGMENT II**

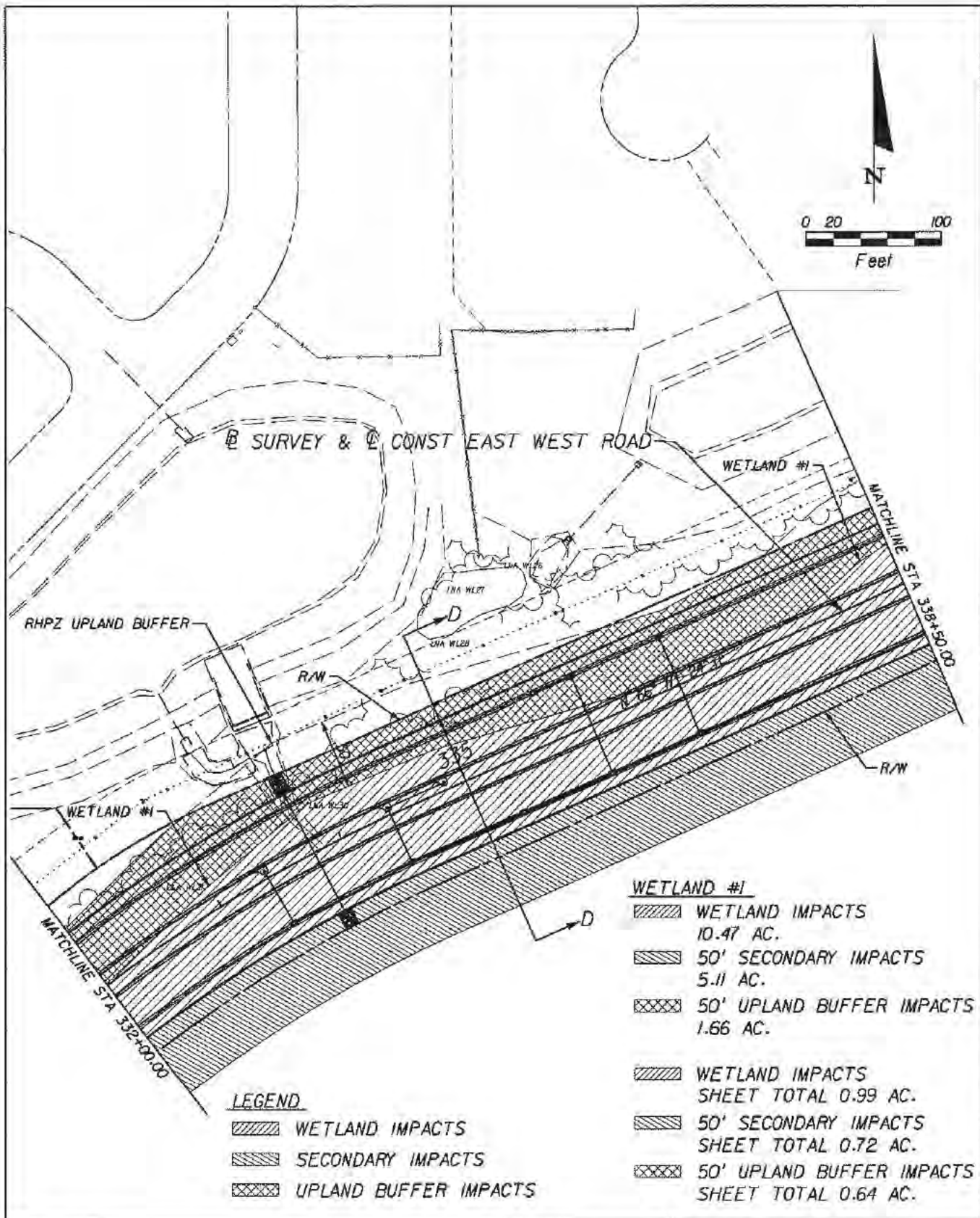
SHEET: 5 OF 19
 SIGNED:
 REG. FLA. ENG. No. : 68228

DRAWN BY: DTL

URS
 315 E. ROBINSON STREET, SUITE 245
 ORLANDO, FL 32801-1975
 PH (407) 422-0353 FAX (407) 423-2695
 NO. 000002

PLAN VIEW
 WETLAND #1

CHECKED BY: FF



STATE: FLORIDA
 COUNTY: ORANGE
 DATUM: FT. NGVD (1929)

EAST WEST ROAD
 SEGMENT II

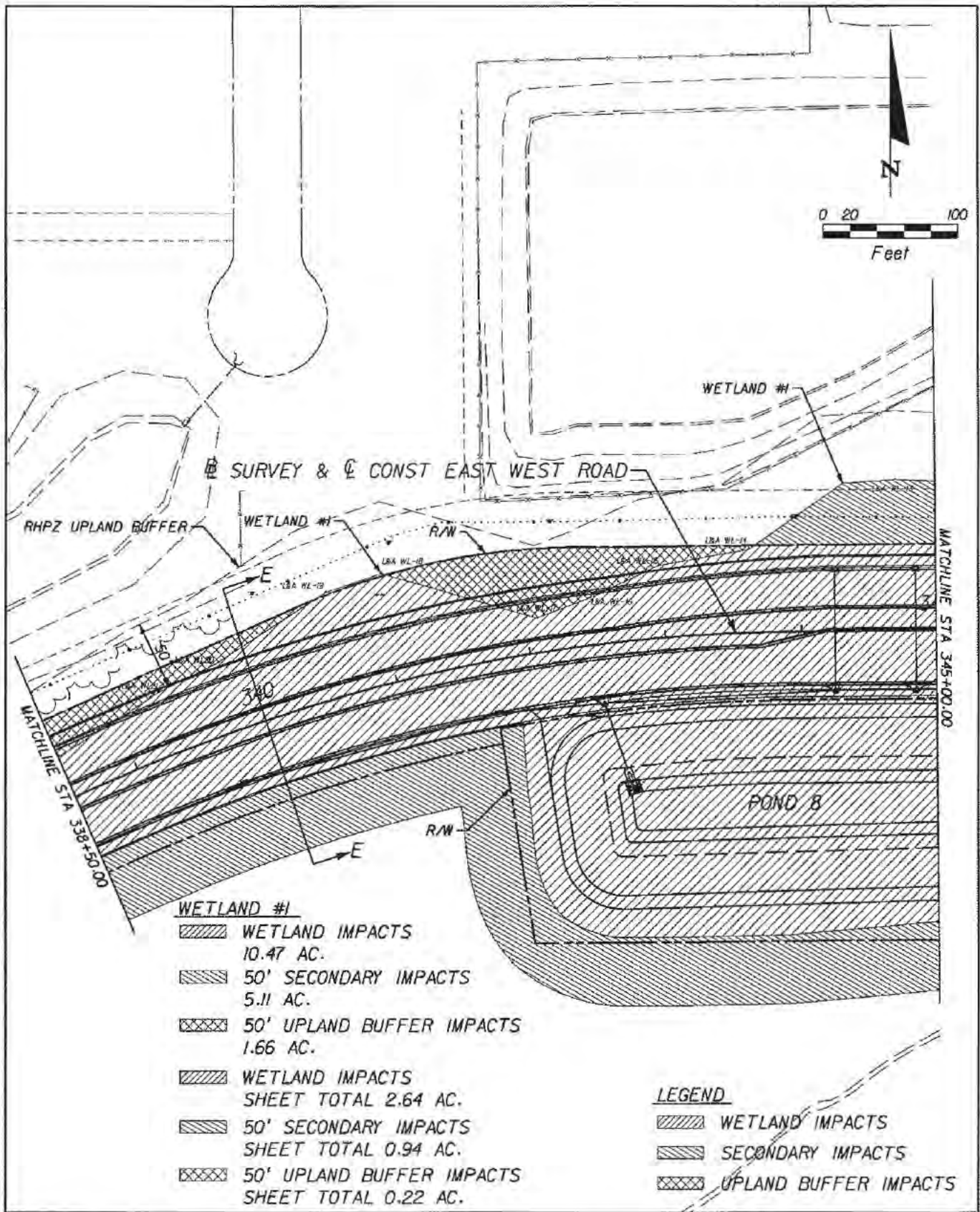
SHEET: 7 OF 19
 SIGNED:
 REG. FLA. ENG. No. : 68228

DRAWN BY: DTL

URS
 315 E. ROBINSON STREET, SUITE 245
 ORLANDO, FL 32801-1975
 PH (407) 422-0353 FAX (407) 423-2595
 NO. 000002

PLAN VIEW
 WETLAND #1

CHECKED BY: FF



STATE: FLORIDA
 COUNTY: ORANGE
 DATUM: FT. NGVD (1929)

EAST WEST ROAD
 SEGMENT II

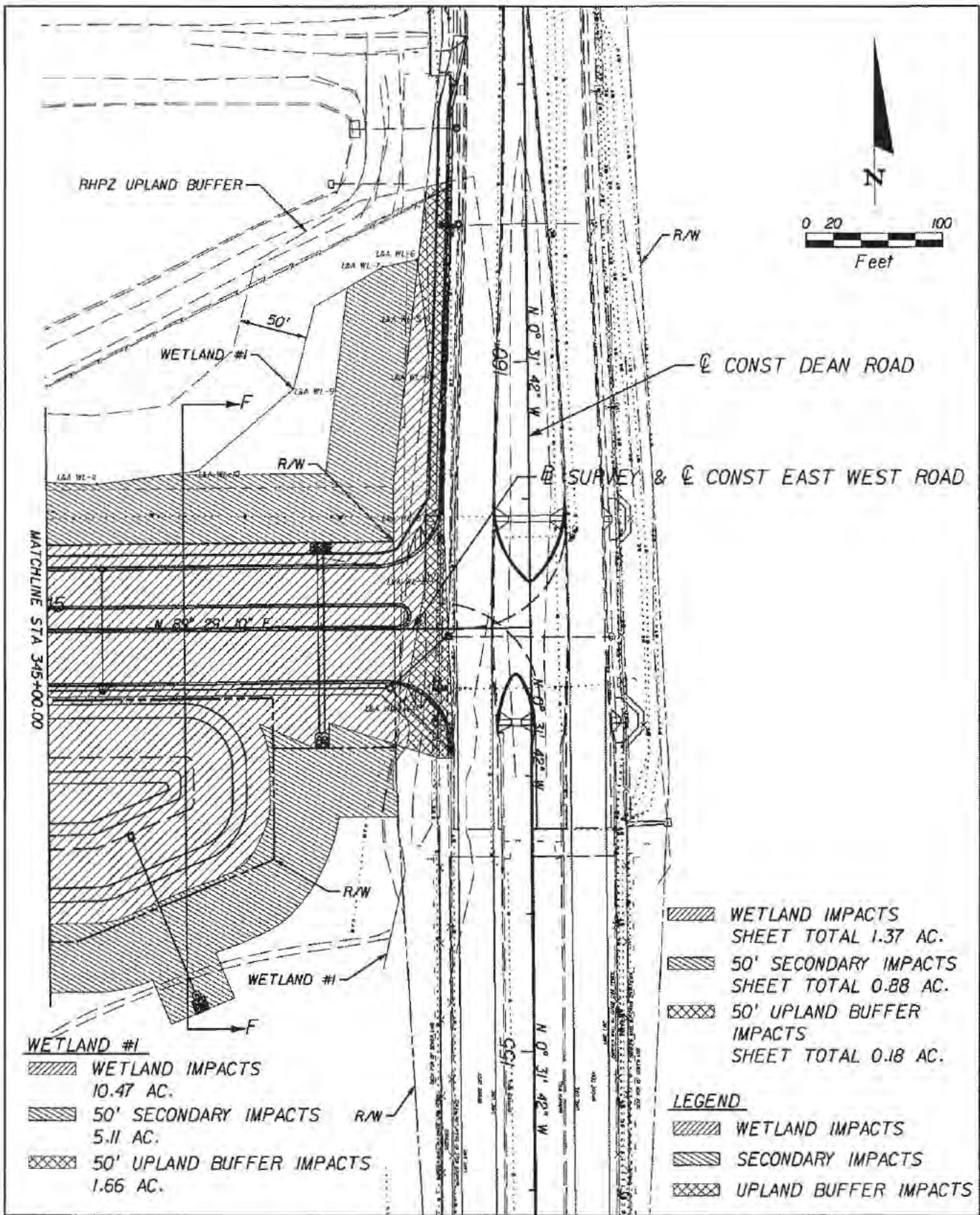
SHEET: 9 OF 19
 SIGNED:
 REG. FLA. ENG. No. : 68228

DRAWN BY: DTL

URS
 315 E. ROBINSON STREET, SUITE 245
 ORLANDO, FL 32801-1975
 PH (407) 422-0353 FAX (407) 423-2695
 NO. 000002

PLAN VIEW
 WETLAND #1

CHECKED BY: FF



WETLAND #1

- WETLAND IMPACTS
10.47 AC.
- 50' SECONDARY IMPACTS
5.11 AC.
- 50' UPLAND BUFFER IMPACTS
1.66 AC.

- WETLAND IMPACTS
SHEET TOTAL 1.37 AC.
- 50' SECONDARY IMPACTS
SHEET TOTAL 0.88 AC.
- 50' UPLAND BUFFER IMPACTS
SHEET TOTAL 0.18 AC.

LEGEND

- WETLAND IMPACTS
- SECONDARY IMPACTS
- UPLAND BUFFER IMPACTS

STATE: FLORIDA
 COUNTY: ORANGE
 DATUM: FT. NGVD (1929)

**EAST WEST ROAD
 SEGMENT II**

SHEET: 11 OF 19
 SIGNED:
 REG. FLA. ENG. No. : 68228

DRAWN BY: DTL

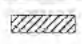


URS

PLAN VIEW
 WETLAND #1

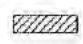
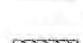

CHECKED BY: FF

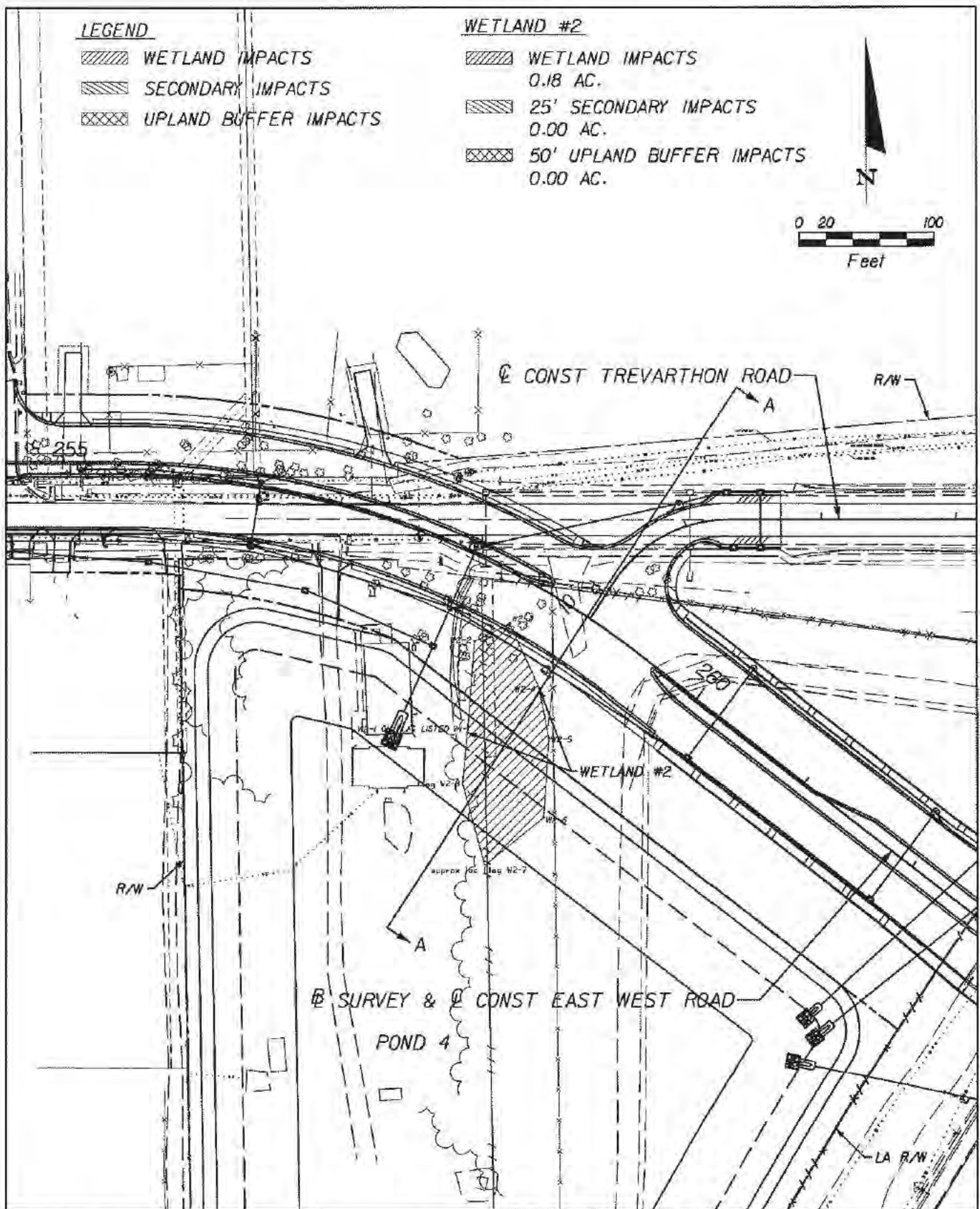
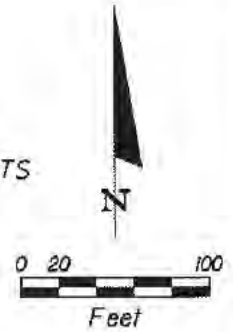
315 E. ROBINSON STREET, SUITE 245
 ORLANDO, FL 32801-1975
 PH (407) 422-0353 FAX (407) 423-2695
 NO. 000002

LEGEND

-  WETLAND IMPACTS
-  SECONDARY IMPACTS
-  UPLAND BUFFER IMPACTS

WETLAND #2

-  WETLAND IMPACTS
0.18 AC.
-  25' SECONDARY IMPACTS
0.00 AC.
-  50' UPLAND BUFFER IMPACTS
0.00 AC.



STATE: FLORIDA
 COUNTY: ORANGE
 DATUM: FT. NGVD (1929)

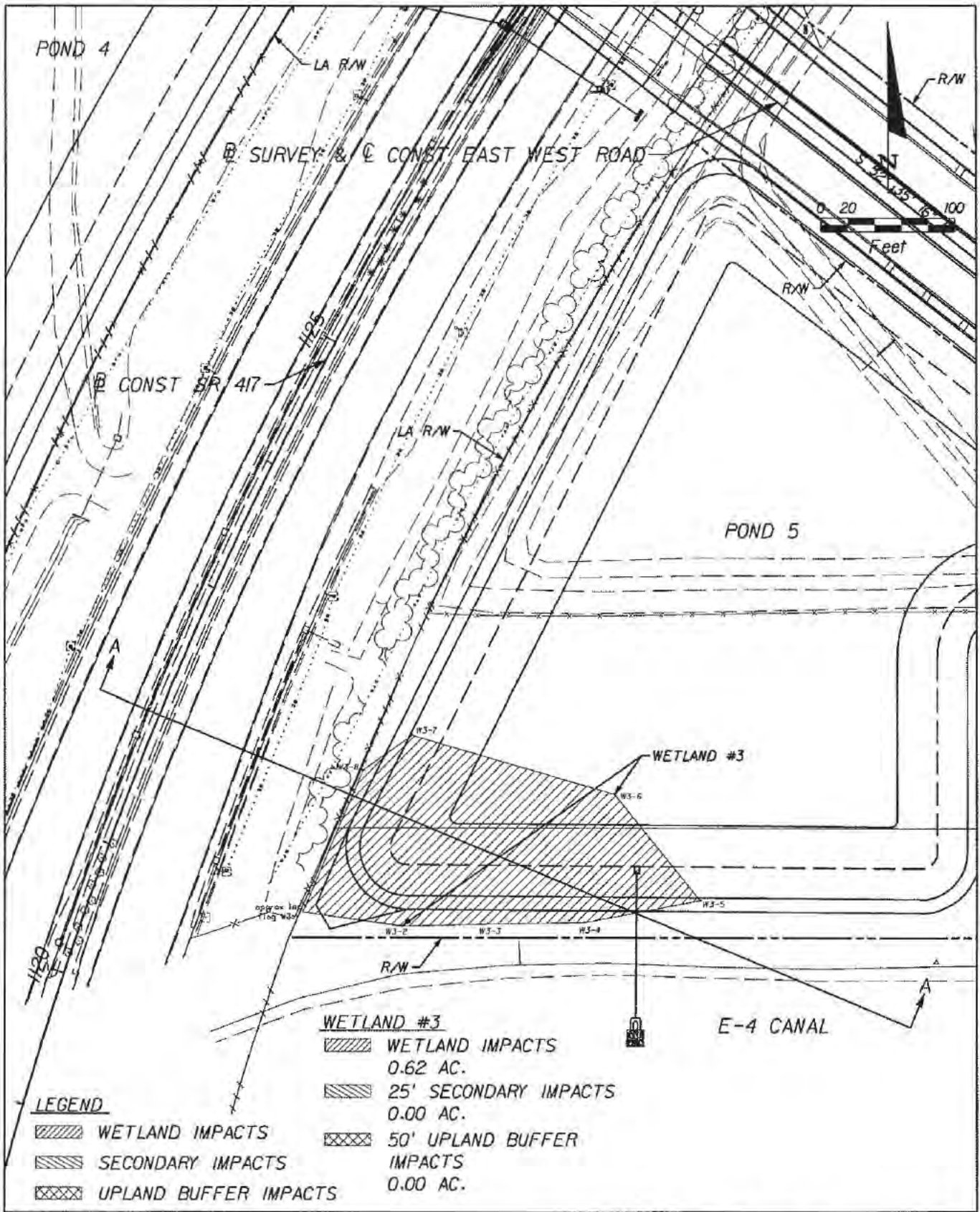
**EAST WEST ROAD
 SEGMENT II**

SHEET: 13 OF 19
 SIGNED:
 REG. FLA. ENG. No. : 68228

DRAWN BY: DTL
 CHECKED BY: FF

URS
 315 E. ROBINSON STREET, SUITE 245
 ORLANDO, FL 32801-1975
 PH (407) 422-0353 FAX (407) 423-2695
 NO. 000002

PLAN VIEW
 WETLAND #2



STATE: FLORIDA
 COUNTY: ORANGE
 DATUM: FT. NGVD (1929)

EAST WEST ROAD
 SEGMENT II

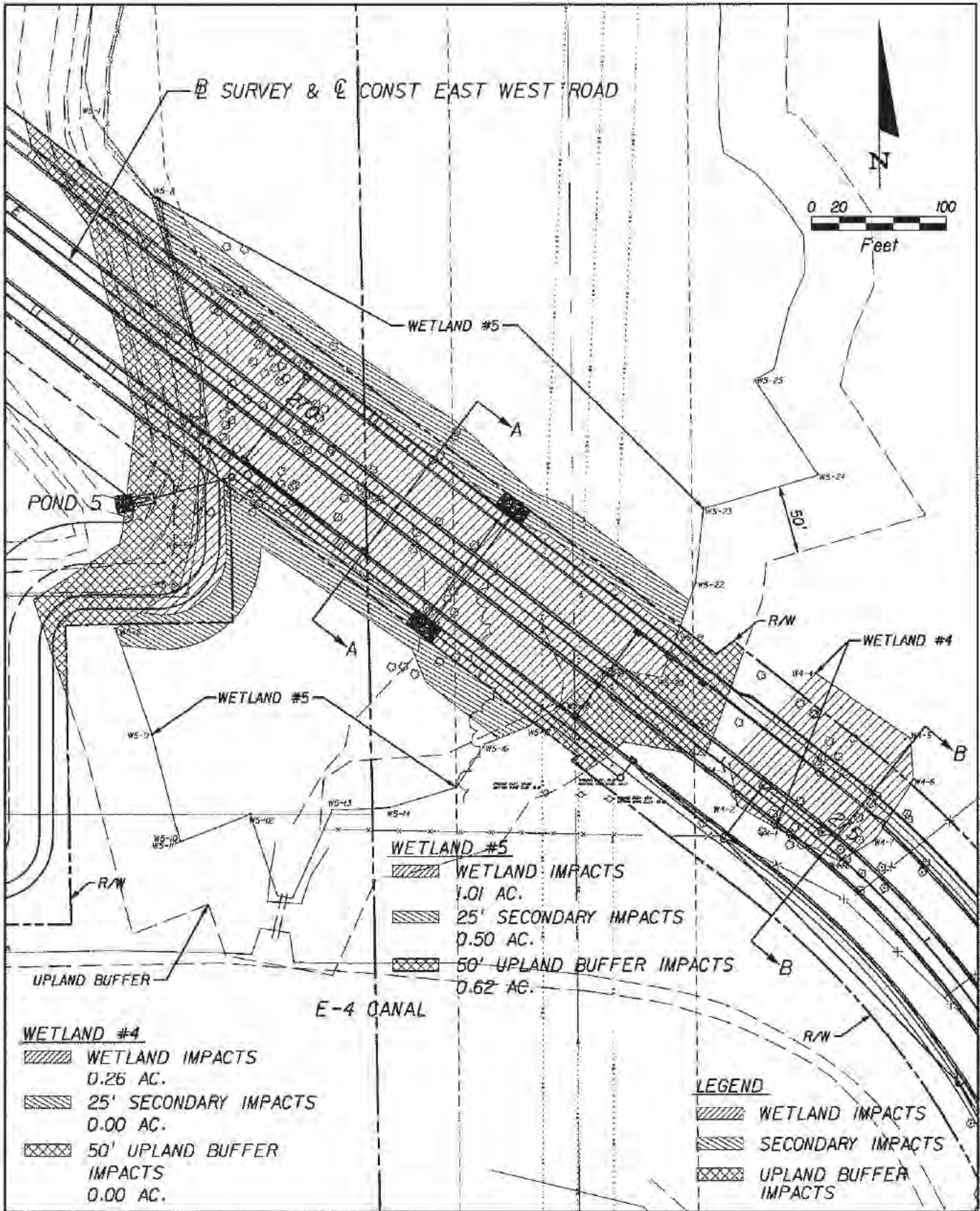
SHEET: 15 OF 19
 SIGNED:
 REG. FLA. ENG. No. : 68228

DRAWN BY: DTL

URS
 315 E. ROBINSON STREET, SUITE 245
 ORLANDO, FL 32801-1975
 PH (407) 422-0353 FAX (407) 423-2695
 NO. 000002

PLAN VIEW
 WETLAND #3

CHECKED BY: FF



STATE: FLORIDA
 COUNTY: ORANGE
 DATUM: FT. NGVD (1929)

**EAST WEST ROAD
 SEGMENT II**

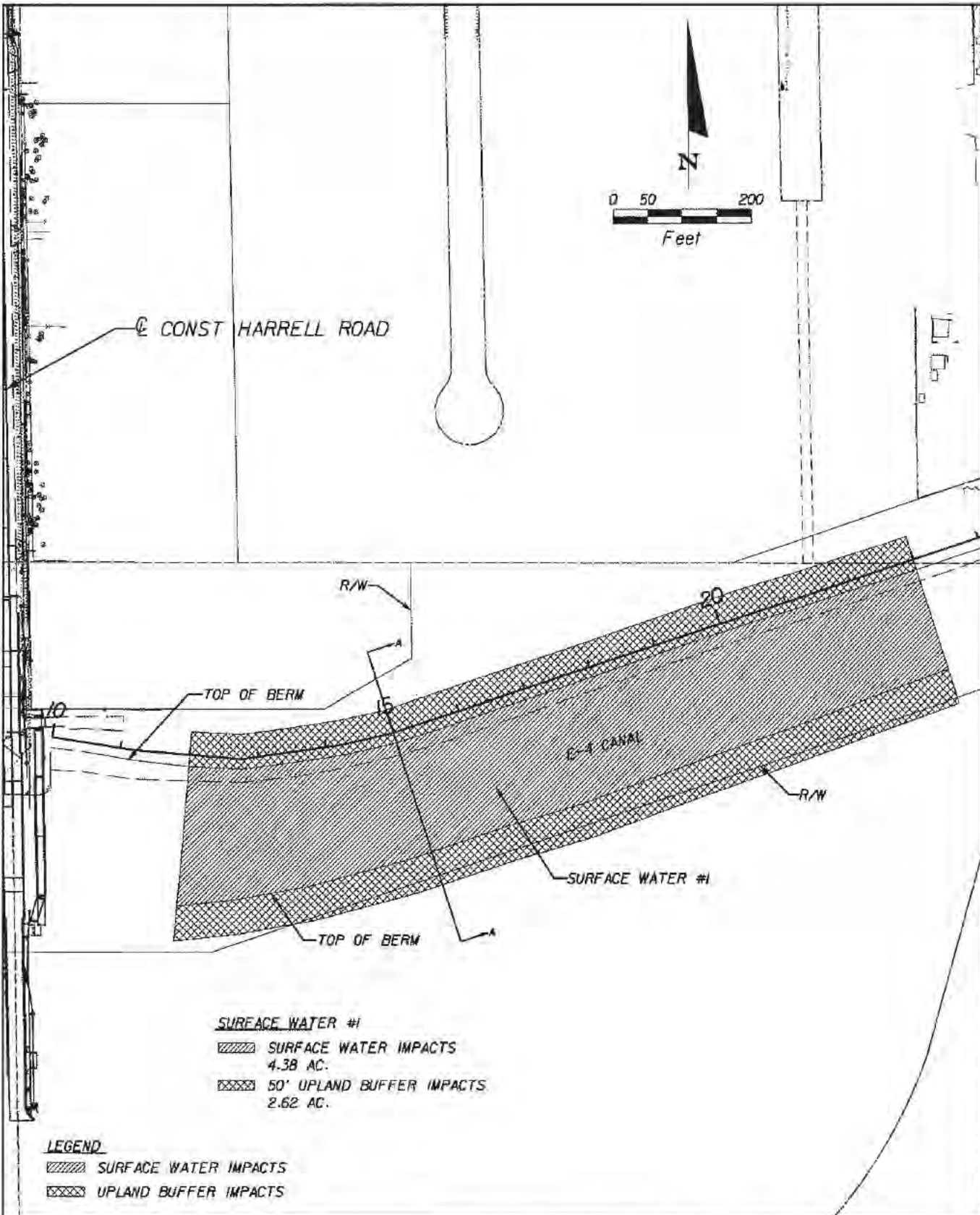
SHEET: 17 OF 19
 SIGNED:
 REG. FLA. ENG. No. : 68228

DRAWN BY: DTL

URS
 315 E. ROBINSON STREET, SUITE 245
 ORLANDO, FL 32801-1975
 PH (407) 422-0353 FAX (407) 423-2695
 NO. 000002

**PLAN VIEW
 WETLAND #4 & #5**

CHECKED BY: FF



SURFACE WATER #1
 ▨ SURFACE WATER IMPACTS
 4.38 AC.
 ▩ 50' UPLAND BUFFER IMPACTS
 2.62 AC.

LEGEND
 ▨ SURFACE WATER IMPACTS
 ▩ UPLAND BUFFER IMPACTS

STATE: FLORIDA COUNTY: ORANGE DATUM: FT. NGVD (1929)	EAST WEST ROAD SEGMENT II	SHEET: 1 OF 2 SIGNED: REG. FLA. ENG. No. : 68228
DRAWN BY: DTI	URS <small>315 E. ROBINSON STREET, SUITE 245 ORLANDO, FL 32801-1975 PH (407) 422-0353 FAX (407) 423-2695 NO. 000002</small>	PLAN VIEW SURFACE WATER #1
CHECKED BY: FF		